



We remove the rubber, unscrew 4 screws



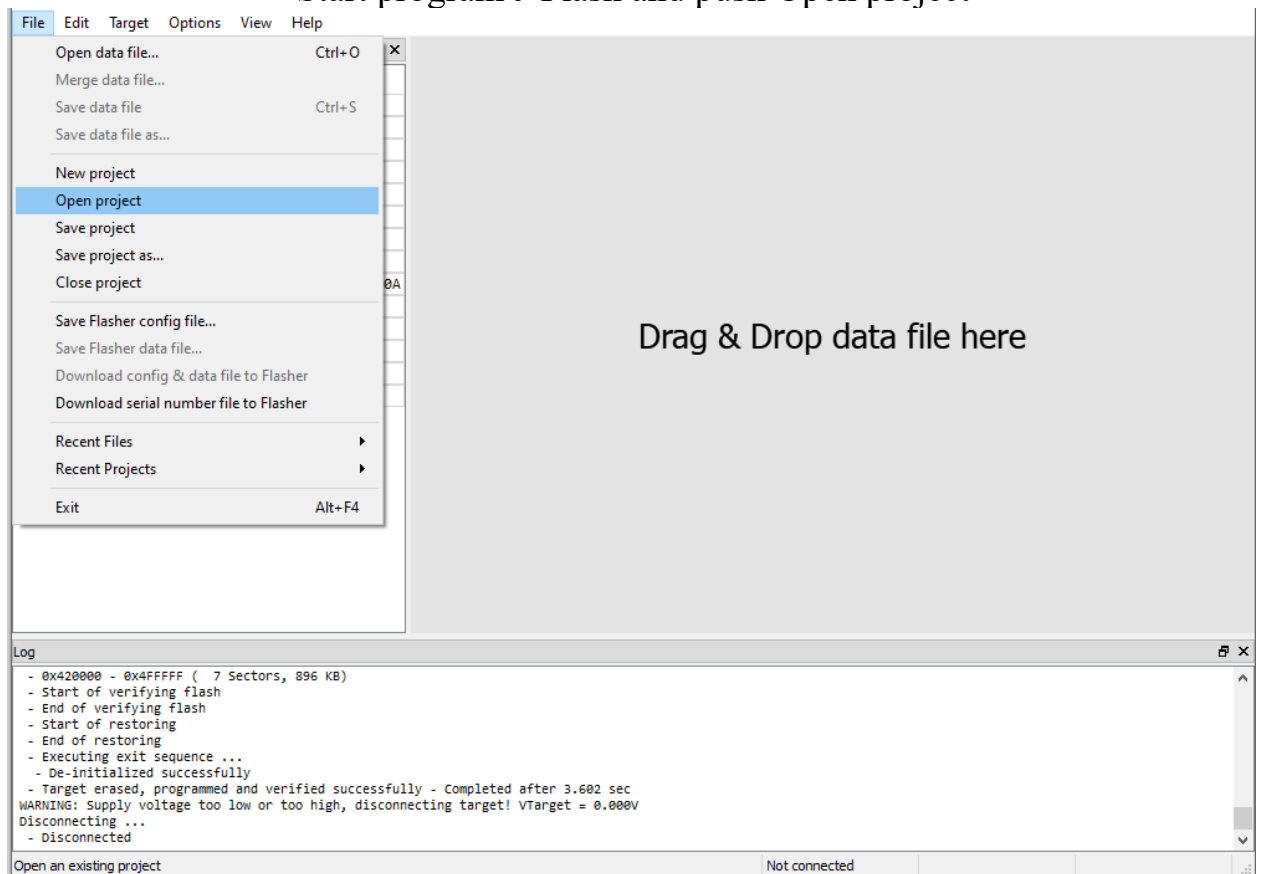
and again unscrew 4 screws



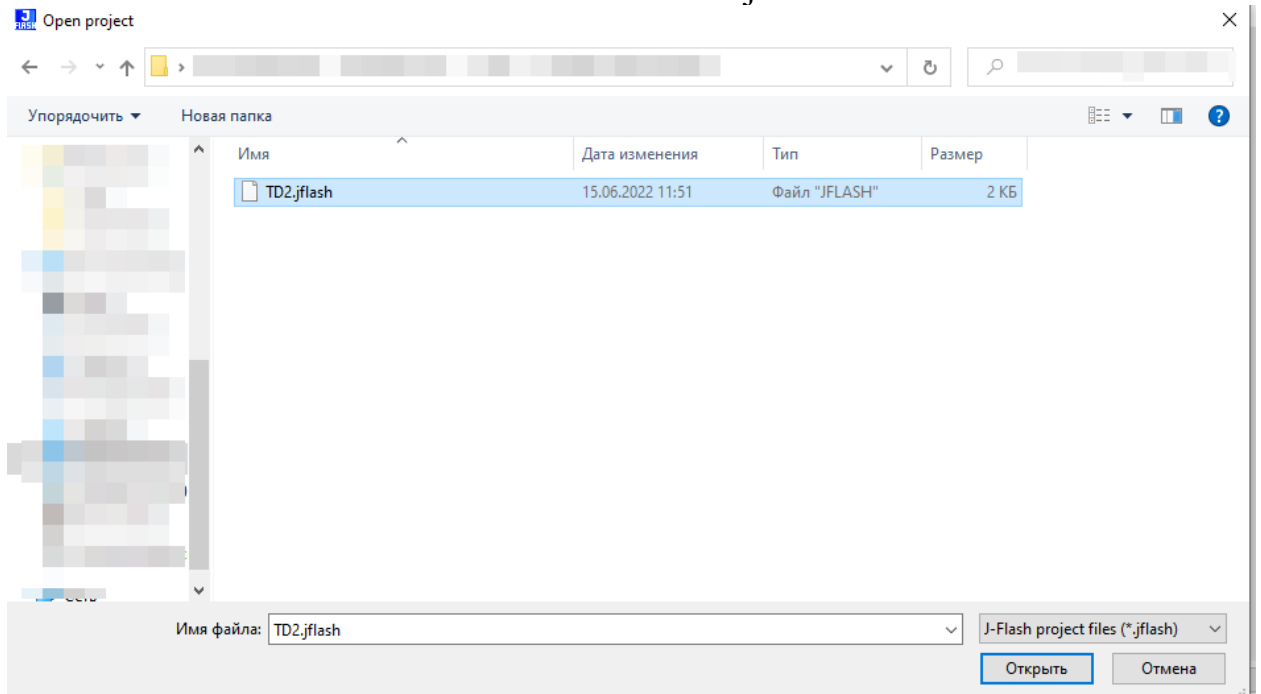
If you want use other firmware after using with not original software, should do reset for connection to jflash. Connect Jlink to usb and to board but +3.3 v should connect to Reset point (TP15) wait 3-4 seconds and return +3.3 v to ordinary point.



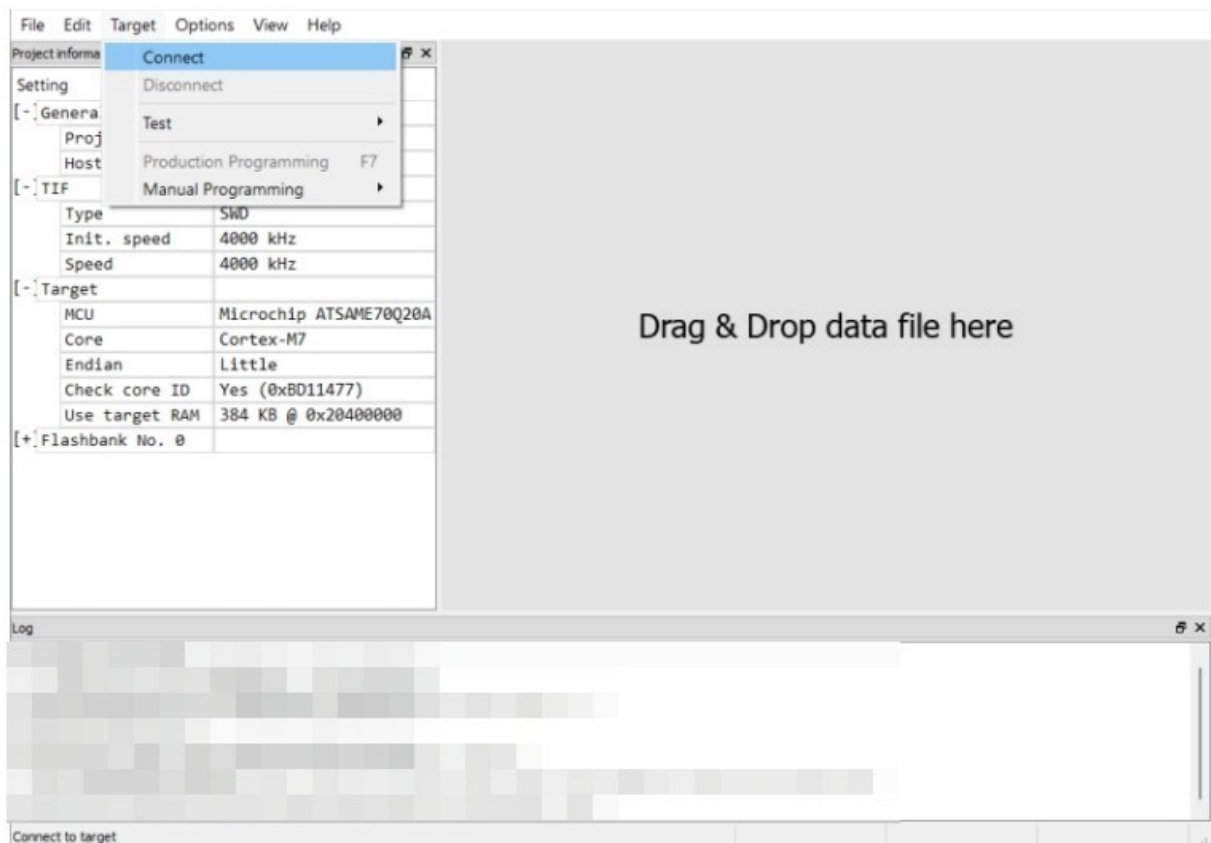
Connect to j-link V9, no lower version
Start program J-Flash and push Open project



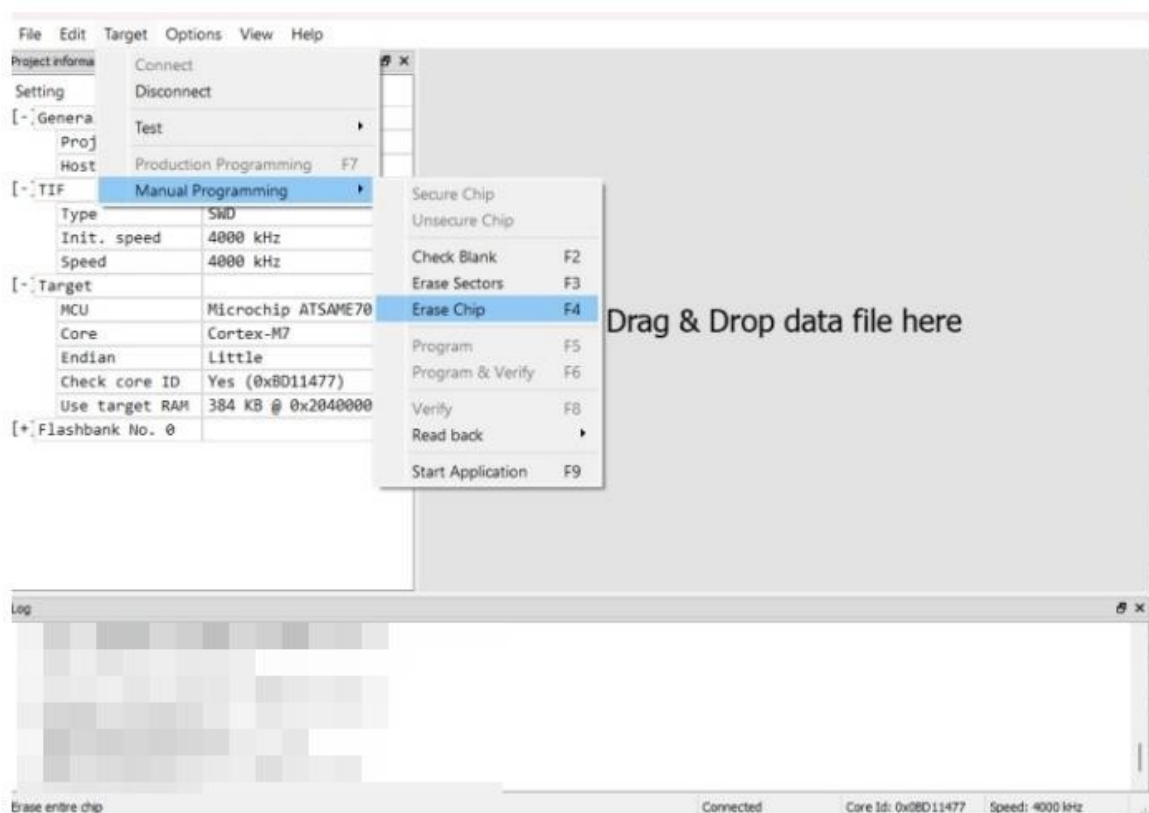
in folder select TD2.jflash



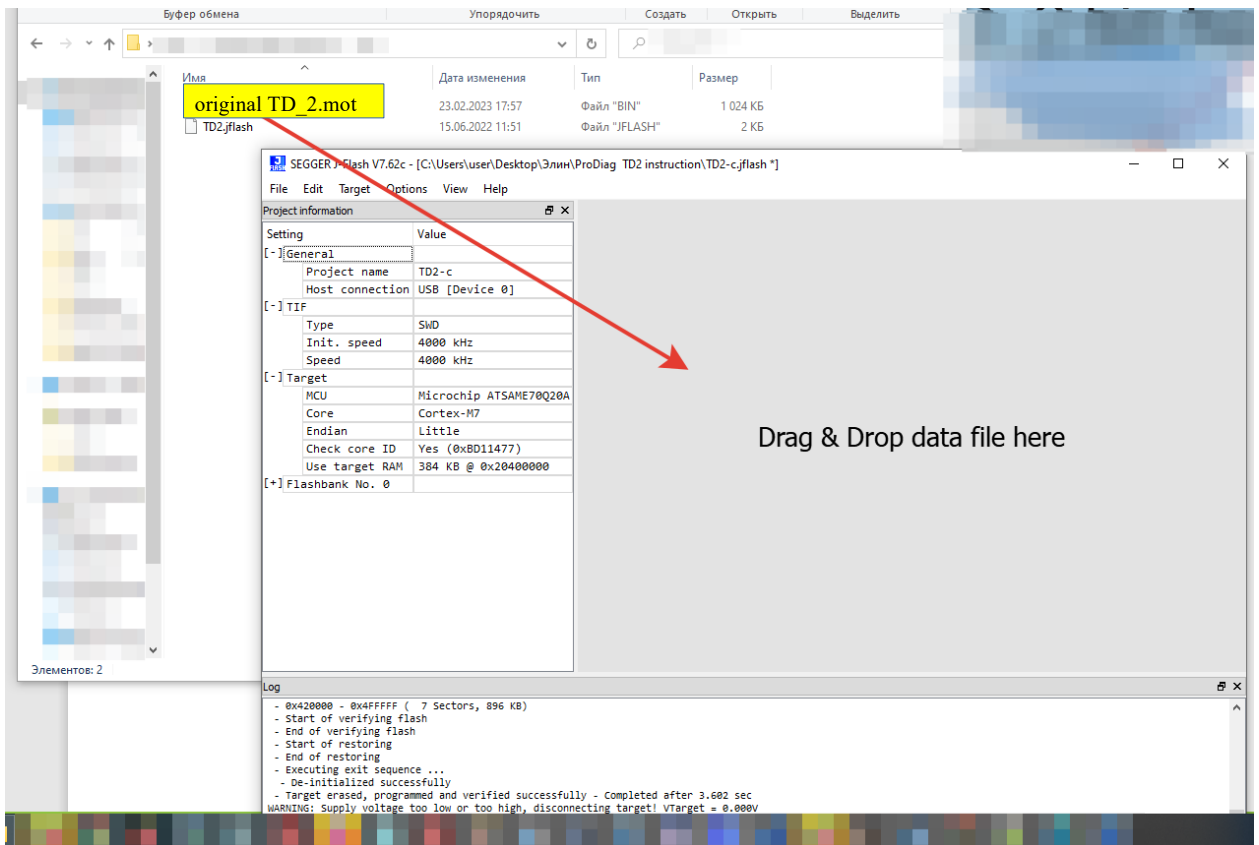
in program select Target/Connect



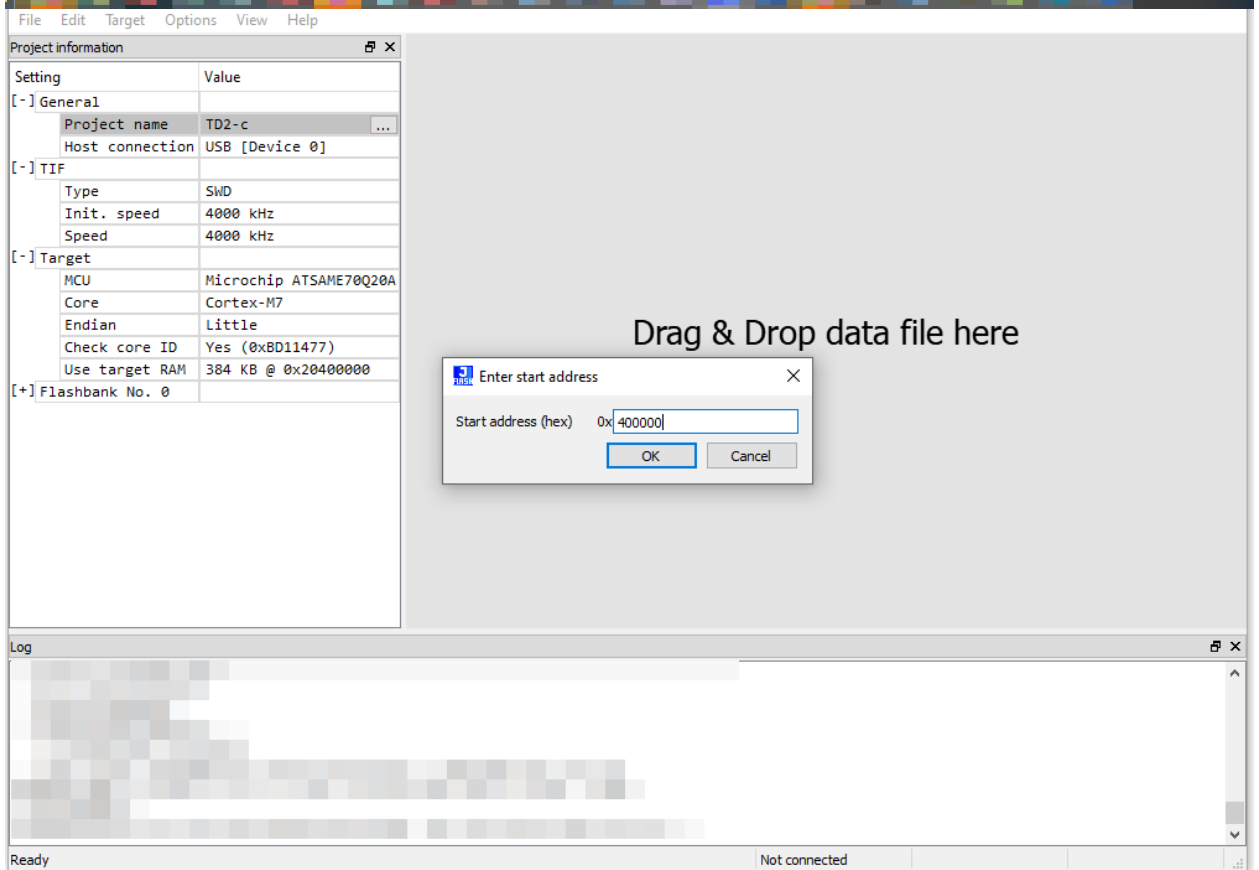
Now erase your chip: Go to Target/Manual Programming/Erase chip



From the TD2 flash folder, drag the file original TD_2.mot here



Drag & Drop data file here



Drag & Drop data file here

OK Now go to : Target/Production Programming
If everything is fine, you will see this message

